



USAID
FROM THE AMERICAN PEOPLE

6. EXERCISE: HOW TO THINK LIKE AN IMPACT ASSESSOR

Location · Month Year



GLOBAL ENVIRONMENTAL
MANAGEMENT SUPPORT

SCENARIO

This is a project planning trip for your economic growth/food security team. To consider:

- HOW DOES FIELD VISIT INFORM OUR ANALYSIS?
- HOW DOES INFO FROM VIRTUAL FIELD VISIT ALIGN WITH INITIAL IMPRESSIONS FROM PROJECT BRIEF?



SESSION OVERVIEW

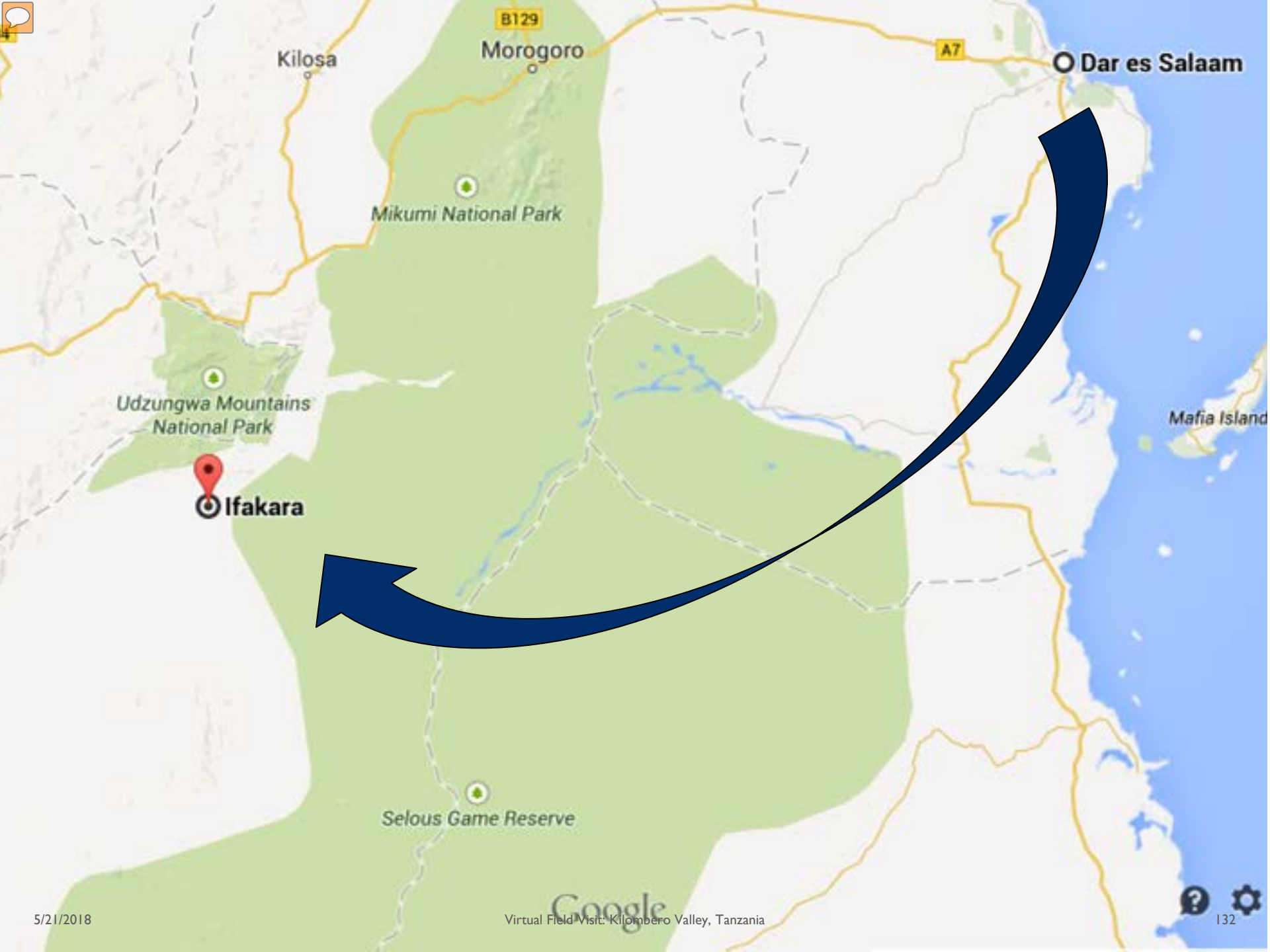
- **BEFORE** we go:
 - Revisit the Impact Identification exercise to refresh your memory on the baseline.
 - Refer to the SEG for Agriculture, should you have additional questions.
- **ON THE VISIT:**
Watch, listen, and ask questions so that we can:
 - Identify the most important aspects of the baseline situation
 - Determine potentially significant environmental and human health impacts
 - Identify potential environmental management (mitigation) measures
 - Determine whether these measures can reliably keep adverse impacts below a significant level
 - Document the above in IEE format



GOVERNMENT OF TANZANIA'S PROPOSAL

- Construction of surface water-based irrigation schemes at five sites in Kilombero District
 - Magombera Kimbiyoko (MaKi), Kisege, Udagaji, Mgugwe, and Mpanga-Ngalimila
 - Construction is complex and will require large-scale earthworks. Each new system will involve weir diversions, distribution canals, secondary control structures, drainage, and on-farm access roads.
- Beneficiaries are smallholder farmers
 - Construction will be combined with a farmer training program





Kilosa

Morogoro

A7

Dar es Salaam

Mikumi National Park

Udzungwa Mountains National Park

Ifakara

Selous Game Reserve

Mafia Island

Google



MIKUMI
NATIONAL PARK
Tel. + 255 23 2620498 Fax. + 255 23 2620441
DANGER
WILD ANIMALS
NEXT 50 KMS
E.mail. mikumi@tanzaniaparks.com







Lake Nation

TANZANIA

Lake Tanganyika

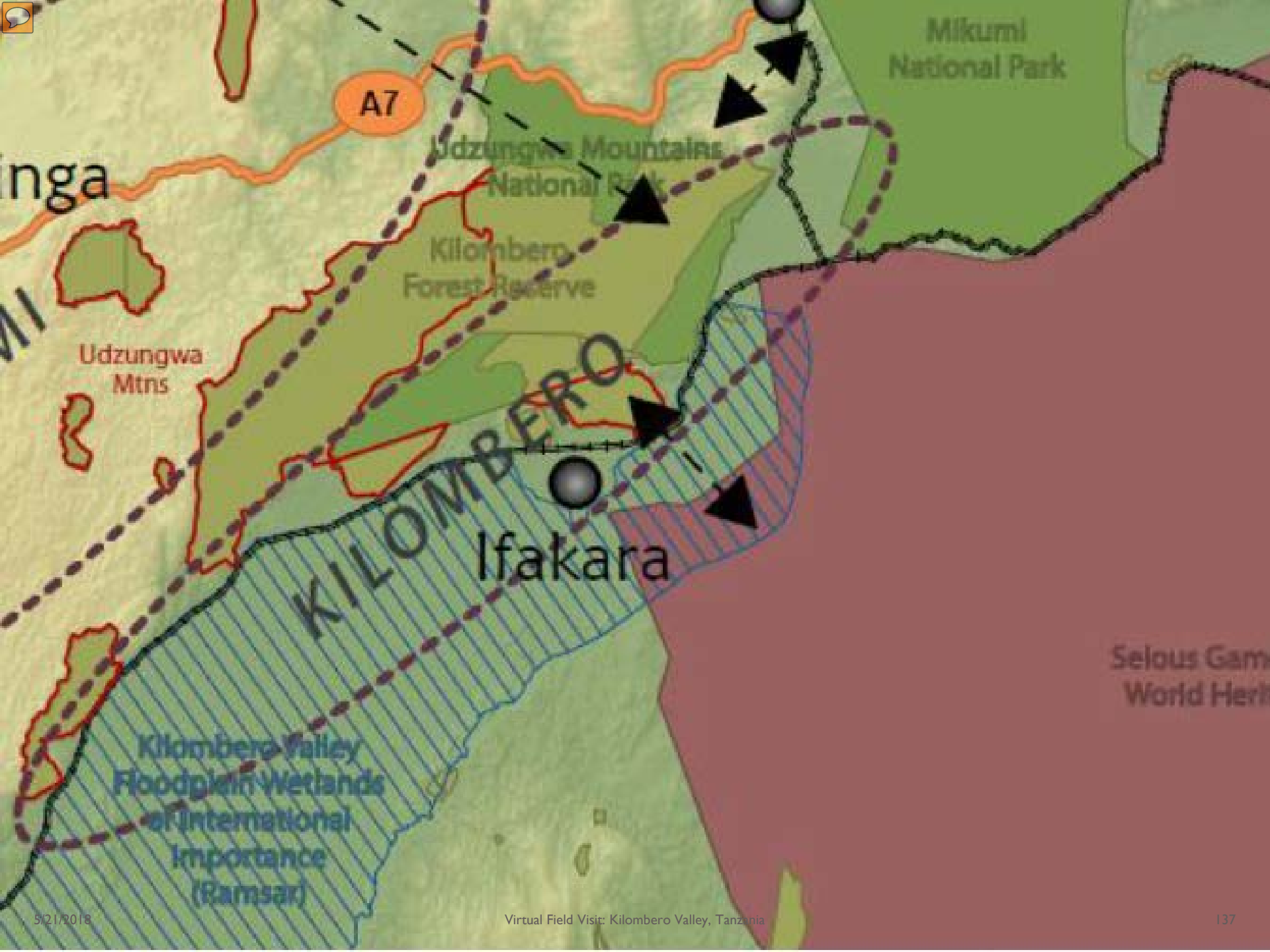
Lake Rukwa

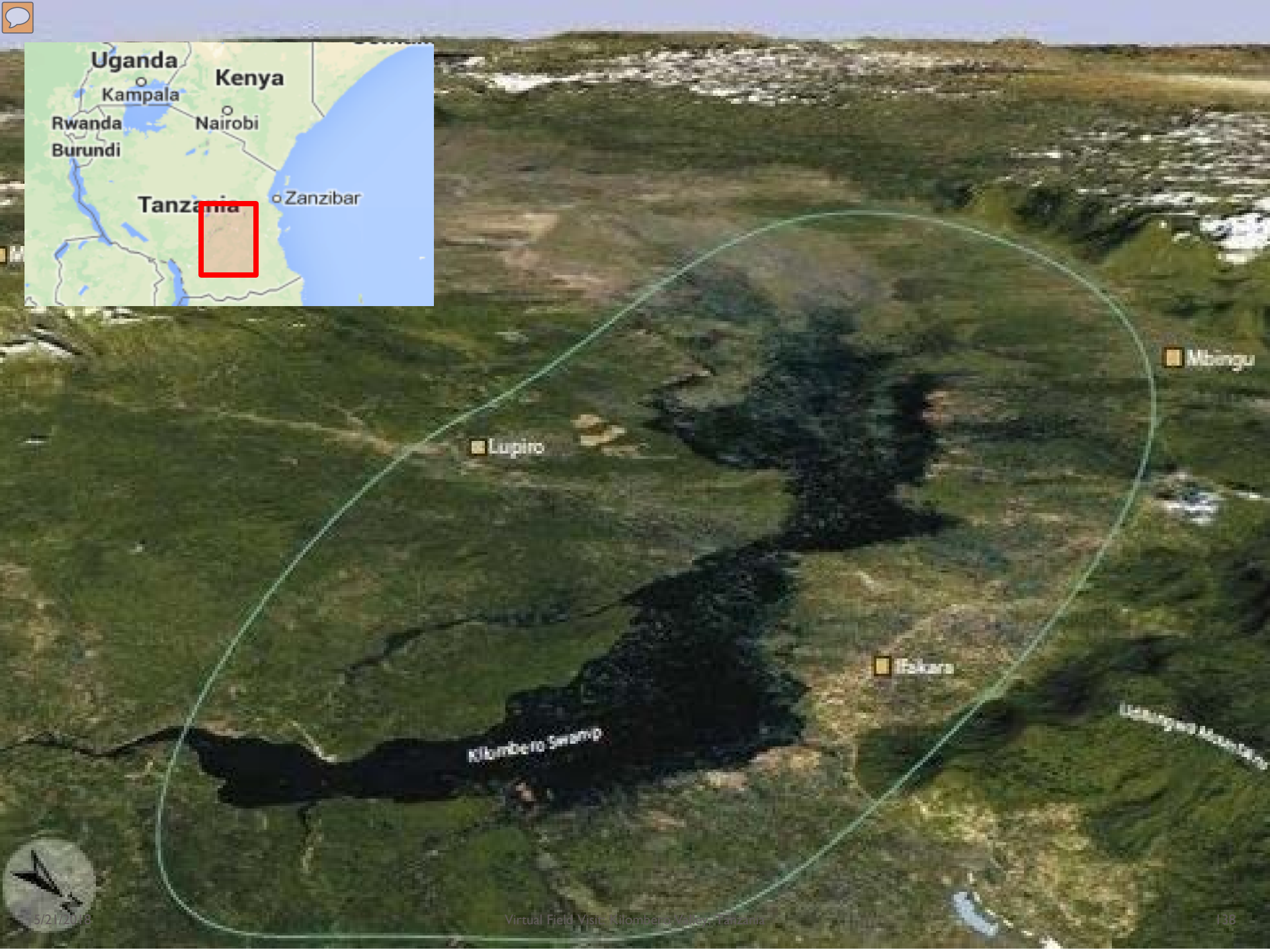
Rufiji basin

Ifakara

Lake Nyasa

















Low-productivity agriculture pastoralism
foraging for forest products and bush
meat (provisioning ecosystem services)







BONDE DOGO LA MTO KIHANSI. JUWAMAKI/UDAGAJI. 2016





















ECOSYSTEM SERVICES

Provisioning Services	Regulating Services	Cultural Services
<p>Food</p> <ul style="list-style-type: none">• Crops• Livestock• Capture fisheries <p>Raw materials</p> <ul style="list-style-type: none">• Timber and other wood fibers• Biomass Fuels• Fresh Water <p>• Pharmaceuticals and natural medicines</p>	<ul style="list-style-type: none">• Regulation of water timing and flows• Erosion control• Maintenance of soil quality• Water purification and waste treatment• Climate regulation (global, local and regional)	<ul style="list-style-type: none">• Spiritual and religious values• Recreation and tourism







Thank you



5/21/2018

Virtual Field Visit: Kilombero Valley, Tanzania

16